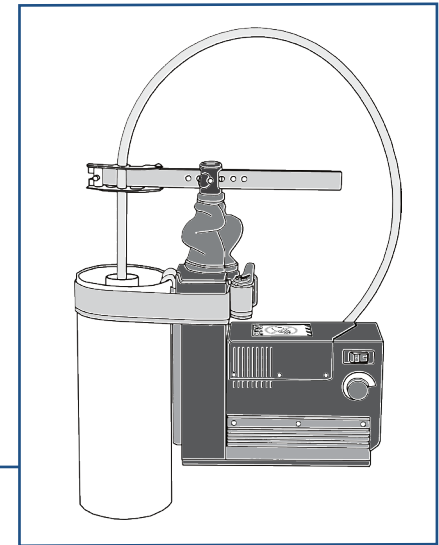
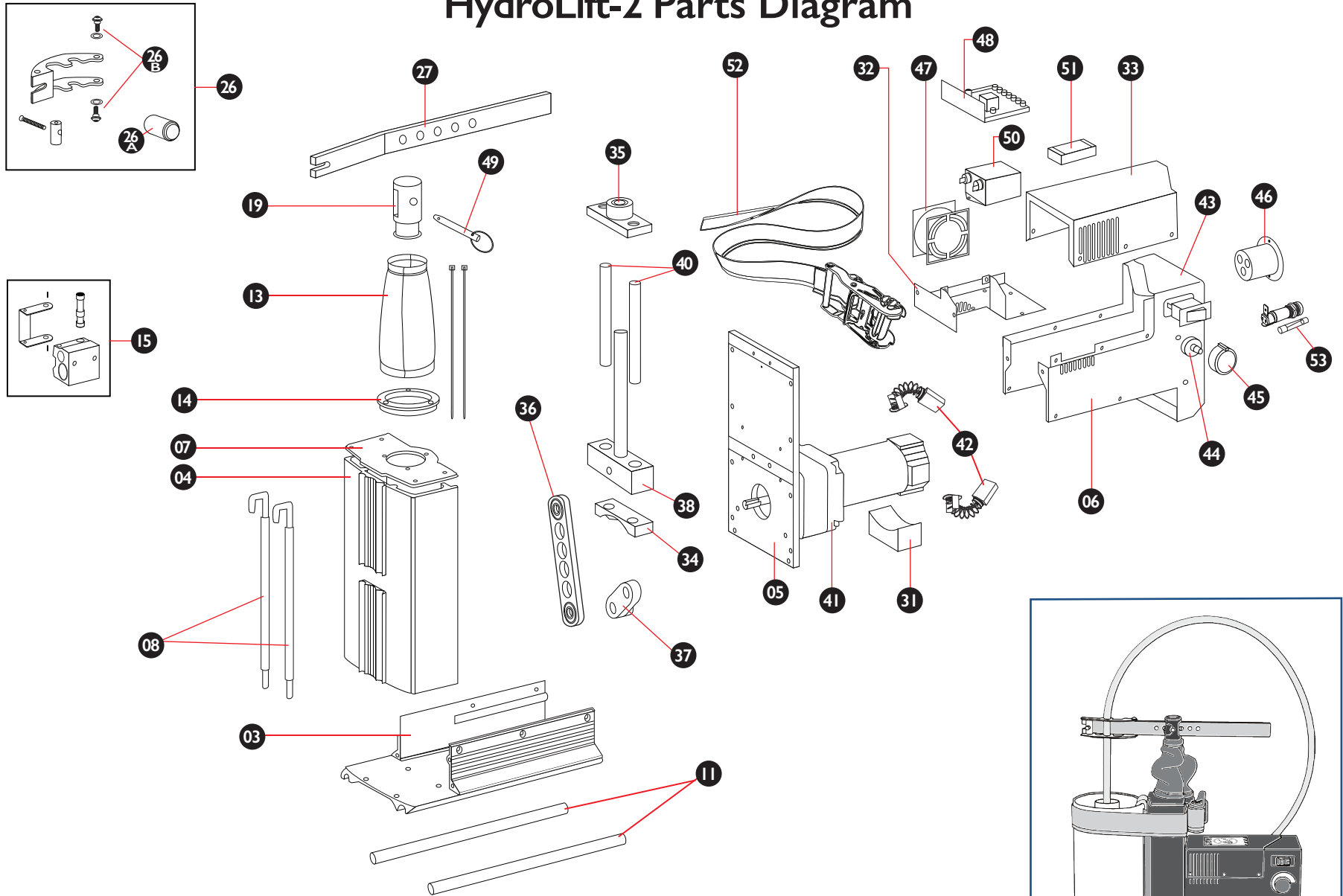


# HydroLift-2 Parts Diagram



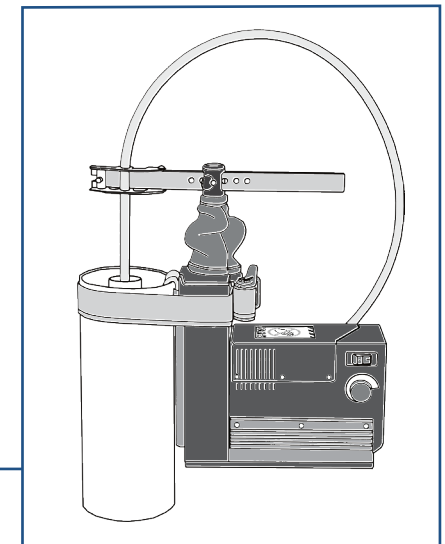
**waterra**

Groundwater Monitoring Equipment & Supplies

Waterra Pumps Limited 5200 Dixie Road, Unit 17 Mississauga, ON Canada L4W 1E4  
 tel: 905.238.5242 • fax: 905.238.5704  
 email: sales@waterra.com • web: www.waterra.com

# HydroLift-2 Parts Diagram

No.	Part Description	Quantity	No.	Part Description	Quantity	No.	Part Description	Quantity
03	– Base	1	26b	– Screw set for tubing clamp	1	43	– Power switch	1
04	– Front cover	1	27	– Clamp arm	1	44	– Potentiometer	1
05	– Support plate	1	31	– Motor bumper	1	45	– Speed control knob	1
06	– Enclosure rear	1	32	– Controller support bracket	1	46	– Power receptacle	1
07	– Top cap	1	33	– Rear lid	1	47	– Fan	1
08	– Front hook set	1	34	– Rail support block - lower	1	48	– Controller	1
11	– Foot	2	35	– Rail support block - upper	1	49	– Clevis pin	1
13	– Neoprene boot	1	36	– Long crank arm (with bearings)	1	50	– RFI filter (CE units only)	1
14	– Flange, boot	1	37	– Short crank arm	1	51	– Surge protector (110v or 220v)	1
15	– Side discharge clamp	1	38	– Sliding block	1	52	– Ratchet belt	1
19	– Fork (clamp arm support)	1	40	– Slide Rails	2	53	– Fuse holder/fuse	1
26	– Tubing clamp bracket	1	41	– Motor/gear box	1			
26a	– Knob	1	42	– Brushes	2			



**waterra**

Groundwater Monitoring Equipment & Supplies

**Waterra Pumps Limited** 5200 Dixie Road, Unit 17 Mississauga, ON Canada L4W 1E4  
 tel: 905.238.5242 • fax: 905.238.5704  
 email: sales@waterra.com • web: www.waterra.com