

# waterra

SIMPLE SOLUTIONS FOR GROUNDWATER MONITORING SINCE 1985

## PRICE SHEET 2022

CANADIAN RETAIL PRICING 🍁



GROUNDWATER FILTERS	3
eDNA FILTERS FOR WATER SAMPLING	4
WATERRA PUMP SYSTEM	7
GROUNDWATER SUBMERSIBLE PUMPS & TUBING	13
PERISTALTIC PUMPS & PERISTALTIC TUBING	15
GROUNDWATER SAMPLING TUBING	17
ecoBAILERS	20
WELL PLUGS	23
HYDRASLEEVE NO-PURGE GROUNDWATER SAMPLER	24
WATER LEVEL SENSOR	27
OIL-WATER INTERFACE SENSOR	28
MISCELLANEOUS SUPPLIES FOR GROUNDWATER MONITORING	29

# waterra

## GROUNDWATER FILTERS

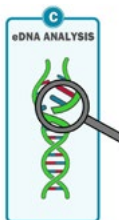
CANADIAN RETAIL PRICING (Prices in CAD)



PRODUCT SKU	DESCRIPTION	RETAIL
<b>HIGH CAPACITY / TURBIDITY 600 square centimeter filtration area – PES* filter membrane</b>		
F-CAP-600x0.1	600 sq. cm x 0.1 micron	\$15.22
F-CAP-600x0.22	600 sq. cm x 0.22 micron	\$15.22
F-CAP-600x0.45-FHT	600 sq. cm x 0.45 micron	\$15.22
F-CAP-600x1.2	600 sq. cm x 1.2 micron	\$15.22
F-CAP-600x5	600 sq. cm x 5 micron	\$15.22
<b>MEDIUM CAPACITY / TURBIDITY 300 square centimeter filtration area – PES* filter membrane</b>		
F-CAP-300x0.1	300 sq. cm x 0.1 micron	\$13.54
F-CAP-300x0.22	300 sq. cm x 0.22 micron	\$13.54
F-CAP-300x0.45-FMT	300 sq. cm x 0.45 micron	\$13.54
F-CAP-300x1.2	300 sq. cm x 1.2 micron	\$13.54
F-CAP-300x5	300 sq. cm x 5 micron	\$13.54

\*PES = PolyetherSulfone

[Learn more about Waterra Filters](#)



PRODUCT SKU	DESCRIPTION	RETAIL
<b>HIGH VOLUME 600 square centimeter filtration area – PES* filter membrane</b>		
eDNA-600x0.1	600 sq. cm x 0.1 micron	\$15.50
eDNA-600x0.22	600 sq. cm x 0.22 micron	\$15.50
eDNA-600x0.45	600 sq. cm x 0.45 micron	\$15.50
eDNA-600x1.2	600 sq. cm x 1.2 micron	\$15.50
eDNA-600x5	600 sq. cm x 5 micron	\$15.50
<b>MEDIUM VOLUME 300 square centimeter filtration area – PES* filter membrane</b>		
eDNA-300x0.1	300 sq. cm x 0.1 micron	\$14.50
eDNA-300x0.22	300 sq. cm x 0.22 micron	\$14.50
eDNA-300x0.45	300 sq. cm x 0.45 micron	\$14.50
eDNA-300x1.2	300 sq. cm x 1.2 micron	\$14.50
eDNA-300x5	300 sq. cm x 5 micron	\$14.50

\*PES = PolyetherSulfone

[Learn more about eDNA Filters for Water Sampling](#)



Syringe Adapter



Filter Shaker



Quad Holder

PRODUCT SKU	DESCRIPTION	UNITS	RETAIL
<b>eDNA SAMPLING ACCESSORIES</b>			
eDNA-Caps	End caps for buffer retention	each	included
eDNA-100ml Syringe	100 ml Syringe	each	\$13.33
eDNA-Syringe Adapter	Waterra syringe adapter for buffer injection and recovery	each	\$1.00
eDNA-Shaker w/o B&C	Waterra Filter Shaker without battery and charger <i>Best for international markets due shipping challenges. Batteries and Chargers sourced locally by customer.</i>	each	\$575.00
eDNA-Shaker Complete	Waterra Filter shaker with battery and charger	each	\$750.00
eDNA-Quad Holder	Holder accomodates 4 filters at the same time Attaches to painter / window washer pole	each	\$400.00
Extension Pole	Painter / washer pole best secured locally due to high shipping costs	each	local
eDNA-Diaphragm Pump	eDNA Diaphragm pump for use with eDNA filters <i>Comes with alligator clips for 12V battery</i>	each	\$147

[Learn more about eDNA Filters for Water Sampling](#)

## eDNA FILTERS FOR WATER SAMPLING (cont')



PRODUCT SKU	DESCRIPTION	UNITS	RETAIL
<b>eDNA SAMPLING ACCESSORIES</b>			
<b>NANO – VOC TUBING 0.17” x 0.25”</b>			
H-0.17x1/4-100	HDPE-100 feet	coils	\$12.00
H-0.17x1/4-500	HDPE-500 feet	coils	\$60.00
L-0.17x1/4-100	LDPE-100 feet	coils	\$12.00
L-0.17x1/4-500	LDPE-500 feet	coils	\$60.00

[Learn more about eDNA Filters for Water Sampling](#)

# waterra

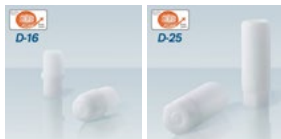
## WATERRA PUMP SYSTEM

CANADIAN RETAIL PRICING (Prices in CAD)



PRODUCT SKU	DESCRIPTION	RETAIL
<b>HIGH FLOW SYSTEM – Footvalves and Surge Blocks</b>		
D-32	Delrin Footvalve 32 mm OD	\$21.00
SBD-32	1.8 inch OD Surge Block: fits D-32 only: 2 inch wells	\$10.00
SBD-32-4	3.8 inch OD Surge Block: fits D-32 only: 4 inch wells	\$20.00
SS-32	316 Stainless Steel Footvalve 32 mm OD	\$150.00
<b>HIGH FLOW POLYETHYLENE TUBING: 0.814" x 1" (except Heavy Wall)</b>		
H-0.814x1-100	HDPE-100 feet	\$99.00
H-0.814x1-200	HDPE-200 feet	\$198.00
H-3/4x1-300HW	Heavy Wall HDPE: 0.75" x 1" - 300 feet	\$315.00

[Learn more about Waterra Pump System](#)



SBD-25-2

SBD-25-4



PRODUCT SKU	DESCRIPTION	RETAIL
<b>STANDARD FLOW SYSTEM – Footvalves and Surge Blocks</b>		
D-16	Delrin Footvalve 16 mm OD	\$12.00
D-22	Delrin Footvalve 22 mm OD to surge 1" ID wells	\$18.00
D-25	Delrin Footvalve 25 mm OD	\$8.50
SBD-25	1.8 inch OD Surge Block: fits D-25 only	\$10.00
SBD-25-4	3.8 inch Surge Block: fits D-25 only	\$20.00
SS-16	316 Stainless Steel Footvalve 16 mm OD	\$39.00
SS-19	316 Stainless Steel Footvalve 19 mm OD	\$62.00

[Learn more about Waterra Pump System](#)





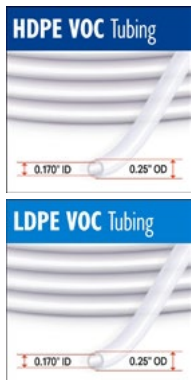
PRODUCT SKU	DESCRIPTION	RETAIL
<b>STANDARD FLOW POLYETHYLENE TUBING: 0.50" x 0.625" (except Heavy Wall)</b>		
H-1/2x5/8-100	HDPE-100 feet	\$41.00
H-1/2x5/8-200	HDPE-200 feet	\$82.00
H-1/2x5/8-500	HDPE-500 feet	\$205.00
H-3/8x5/8-300HW	Heavy Wall HDPE: 0.375" x 0.625" – 300 feet	\$270.00
L-1/2x5/8-100	LDPE-100 feet	\$41.00
L-1/2x5/8-200	LDPE-200 feet	\$82.00
L-1/2x5/8-500	LDPE-500 feet	\$205.00
<b>LOW FLOW SYSTEM – Footvalves</b>		
D-13	Delrin Footvalve 13 mm OD	\$11.00
SS-13	316 Stainless Steel Footvalve 13 mm OD	\$35.00

[Learn more about Waterra Pump System](#)



PRODUCT SKU	DESCRIPTION	RETAIL
<b>LOW FLOW POLYETHYLENE TUBING: 0.375" x 0.50"</b>		
H-3/8x1/2-100	HDPE-100 feet	\$23.00
H-3/8x1/2-500	HDPE-500 feet	\$112.00
L-3/8x1/2-100	LDPE-100 feet	\$23.00
L-3/8x1/2-500	LDPE-500 feet	\$112.00
<b>MICRO FLOW SYSTEM – Footvalves</b>		
SS-10	316 Stainless Steel Footvalve 10 mm OD	\$29.00
<b>MICRO FLOW POLYETHYLENE TUBING: 0.25" x 0.375"</b>		
H-1/4x3/8-100	HDPE-100 feet	\$20.00
H-1/4x3/8-500	HDPE-500 feet	\$100.00
L-1/4x3/8-100	LDPE-100 feet	\$20.00
L-1/4x3/8-500	LDPE-500 feet	\$100.00

[Learn more about Waterra Pump System](#)



PRODUCT SKU	DESCRIPTION	RETAIL
<b>NANO FLOW SYSTEM – Footvalves</b>		
SS-6	316 Stainless Steel Footvalve 6 mm OD	\$36.00
SS-9	316 Stainless Steel Footvalve 9 mm OD	\$24.00
<b>NANO – VOC POLYETHYLENE TUBING: 0.17" x 0.25"</b>		
H-0.17x1/4-100	HDPE-100 feet	\$12.00
H-0.17x1/4-500	HDPE-500 feet	\$60.00
L-0.17x1/4-100	LDPE-100 feet	\$12.00
L-0.17x1/4-500	LDPE-500 feet	\$60.00
<b>WATERRA VALVE WRENCH</b>		
WVW-1	Waterra Valve Wrench fits all except SS-6, 9 & 19 valves	\$2.50

[Learn more about Waterra Pump System](#)



Lever Arm



Hydrolift



Power Pack

PRODUCT SKU	DESCRIPTION	RETAIL
<b>WATERRA PUMP SYSTEM TUBING ACTUATORS</b>		
WLP-100	Lever Arm	\$575
Hydrolift-110V	Electric Tubing Actuator 110 V	\$3,025
Hydrolift-220V	Electric Tubing Actuator 220 V	\$3,205
Power Pack	Gasoline Tubing Actuator	\$5,040
<b>MISCELLANEOUS</b>		
WTC	Waterra Tubing Cutter	\$19.50

[Learn more about Waterra Pump System](#)



PRODUCT SKU	DESCRIPTION	RETAIL
<b>12 VOLT SUBMERSIBLE PUMPS</b>		
<b>WP40-12V</b>	1.4" OD x 5" Max lift 40 feet = 12 meters Max current: 3.5 Amps 62 feet = 19 m power cable Comes with alligator clips	\$166.00
<b>WP60-12V</b>	1.7" OD x 10.2" Max lift : 60 feet = 18 meters Max current: 6.4 Amps 62 feet = 19 m power cable Comes with alligator clips	\$249.00
<b>WP90-12V</b>	1.7" OD x 15.4" Max lift : 90 feet = 27 meters Max current: 8.0 Amps 95 feet = 29 m power cable Comes with alligator clips	\$499.00
<b>WASP Controller</b>	12V input via alligator clips Two terminals to accommodate hookup to pumps Max current 25 Amps	\$650.00

[Learn more about Groundwater Sampling Submersible Pumps](#)

## GROUNDWATER SUBMERSIBLE PUMPS & TUBING (cont')

All Submersible Pumps fit Standard Flow and Low Flow LDPE tubing



TUBING TYPE	PRODUCT SKU	DESCRIPTION	RETAIL
<b>STANDARD FLOW 0.50" x 0.625" (except Heavy Wall)</b>			
<b>LDPE – Low Density Polyethylene</b>	L-1/2x5/8-100	LDPE-100 feet	\$41.00
	L-1/2x5/8-200	LDPE-200 feet	\$82.00
	L-1/2x5/8-500	LDPE-500 feet	\$205.00
<b>LOW FLOW 0.375" x 0.50"</b>			
<b>LDPE – Low Density Polyethylene</b>	L-3/8x1/2-100	LDPE-100 feet	\$23.00
	L-3/8x1/2-500	LDPE-500 feet	\$112.00
<b>WATERRA TUBING CUTTER</b>			
	<b>WTC</b>	Watterra Tubing Cutter	\$19.50

[Learn more about Groundwater Sampling Submersible Pumps](#)



PRODUCT SKU	DESCRIPTION	RETAIL
<b>PERISTALTIC PUMPS</b>		
	<b>Waterra-1-UP-Pump</b> 112/220 V or 12 V input 4 choices of rechargeable battery USB port to recharge cell phone Tubing size: UP # 15 and UP # 24 weight without battery 14 pounds = 6.4 kg	
UP-Pump-SLA-20	20 Ahr Sealed Lead Acid Battery* 13.1 pounds 6 kg	\$2,099
UP-Pump-SLA-12	12 Ahr Sealed Lead Acid Battery* 7.9 pound 3.6 kg	\$2,074
UP-Pump-LIFE-20	20 Ahr Lithium Iron Phosphate Battery* 6.6 pounds 3 kg	\$2,299
UP-Pump-LIFE-12	12 Ahr Lithium Iron Phosphate Battery* 4 pounds 1.8 kg	\$2,259
SFP-100	Spectra Field Pro	\$2,195
EzyFlow	EzyFlow	\$2,195

\*SLA batteries are Sealed Lead Acid of the AGM type Absorbed Glass Matte

\*LIFE batteries are Lithium Iron Phosphate which are about 50% lighter than the equivalent SLA battery

\*LIFE batteries are becoming more popular because of their weight savings and better power curves but are not CSA approved

[Learn more about Peristaltic Pumps](#)

## PERISTALTIC PUMPS & PERISTALTIC TUBING (cont')

### HDPE VOC Tubing



### LDPE VOC Tubing



PRODUCT SKU	DESCRIPTION	RETAIL
<b>PERISTALTIC TUBING</b>		
UP#15-Silicone	Waterra UP #15 Silicone Tubing – 10m roll	\$95.00
UP#24-Silicone	Waterra UP #24 Silicone Tubing – 10m roll	\$115.00
<b>NANO – VOC Polyethylene Tubing: 0.17 in x 0.25 in</b>		
H-0.17x1/4-100	HDPE-100 feet	\$12.00
H-0.17x1/4-500	HDPE-500 feet	\$60.00
L-0.17x1/4-100	LDPE-100 feet	\$12.00
L-0.17x1/4-500	LDPE-500 feet	\$60.00
<b>WATERRA TUBING CUTTER</b>		
WTC	Waterra Tubing Cutter	\$19.50

[Learn more about Peristaltic Pumps](#)



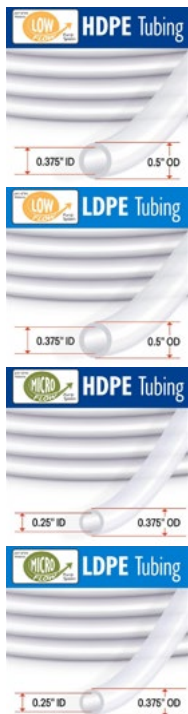
## GROUNDWATER SAMPLING TUBING



TUBING TYPE	PRODUCT SKU	DESCRIPTION	RETAIL
<b>HIGH FLOW 0.814" x 1" (except Heavy Wall)</b>			
<b>HDPE – High Density Polyethylene</b>	H-0.814x1-100	HDPE-100 feet	\$99.00
	H-0.814x1-200	HDPE-200 feet	\$198.00
	H-3/4x1-300HW	Heavy Wall HDPE 0.75" x 1" - 300 feet	\$315.00
<b>STANDARD FLOW 0.50" x 0.625" (except Heavy Wall)</b>			
<b>HDPE – High Density Polyethylene</b>	H-1/2x5/8-100	HDPE-100 feet	\$41.00
	H-1/2x5/8-200	HDPE-200 feet	\$82.00
	H-1/2x5/8-500	HDPE-500 feet	\$205.00
	H-3/8x5/8-300HW	Heavy Wall HDPE 0.375" x 0.625" - 300 feet	\$270.00
<b>LDPE – Low Density Polyethylene</b>	L-1/2x5/8-100	LDPE-100 feet	\$41.00
	L-1/2x5/8-200	LDPE-200 feet	\$82.00
	L-1/2x5/8-500	LDPE-500 feet	\$205.00

[Learn more about Groundwater Sampling Tubing](#)

## GROUNDWATER SAMPLING TUBING (cont')



TUBING TYPE	PRODUCT SKU	DESCRIPTION	RETAIL
<b>LOW FLOW 0.375" x 0.50"</b>			
<b>HDPE – High Density Polyethylene</b>	H-3/8x1/2-100	HDPE-100 feet	\$23.00
	H-3/8x1/2-500	HDPE-500 feet	\$112.00
<b>LDPE – Low Density Polyethylene</b>	L-3/8x1/2-100	LDPE-100 feet	\$23.00
	L-3/8x1/2-500	LDPE-500 feet	\$112.00
<b>MICRO FLOW 0.25" x 0.375"</b>			
<b>HDPE – High Density Polyethylene</b>	H-1/4x3/8-100	HDPE-100 feet	\$20.00
	H-1/4x3/8-500	HDPE-500 feet	\$100.00
<b>LDPE – Low Density Polyethylene</b>	L-1/4x3/8-100	LDPE-100 feet	\$20.00
	L-1/4x3/8-500	LDPE-500 feet	\$100.00

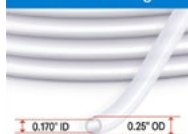
[Learn more about Groundwater Sampling Tubing](#)

## GROUNDWATER SAMPLING TUBING (cont')

### HDPE VOC Tubing



### LDPE VOC Tubing



### SILICONE Peristaltic Tubing



PRODUCT TYPE	PRODUCT SKU	DESCRIPTION	RETAIL
<b>NANO – VOC TUBING 0.17" x 0.25"</b>			
<b>HDPE – High Density Polyethylene</b>	H-0.17x1/4-100	HDPE-100 feet	\$12.00
	H-0.17x1/4-500	HDPE-500 feet	\$60.00
<b>LDPE – Low Density Polyethylene</b>	L-0.17x1/4-100	LDPE-100 feet	\$12.00
	L-0.17x1/4-500	LDPE-500 feet	\$60.00
<b>PERISTALTIC TUBING</b>			
	<b>UP#15-Silicone</b>	Waterra UP #15 Silicone Tubing 4.8 mm x 9.8 mm - 10 m roll	\$95.00
	<b>UP#24-Silicone</b>	Waterra UP #24 Silicone Tubing 6.4 mm x 11.4 mm - 10 m roll	\$115.00
<b>TEFLON – FEP TUBING</b>	Limited stock available – please call		
<b>TUBING CUTTER</b>	<b>WTC</b>	Waterra Tubing Cutter	\$19.50

[Learn more about Groundwater Sampling Tubing](#)



PRODUCT SKU	DIAMETER (IN)	LENGTH (FT)	UNITS / CASE	RETAIL
<b>CLEAR PVC (BLUE PARTS)</b>				
ecoPVC-501	0.46	1	24	\$125.81
ecoPVC-503	0.46	3	24	\$154.31
ecoPVC-701	0.7	1	24	\$108.25
ecoPVC-703	0.7	3	24	\$138.65
ecoPVC-151	1.5	1	24	\$119.38
ecoPVC-153	1.5	3	24	\$160.70
ecoPVC-154	1.5	4	24	\$192.80
ecoPVC-333	3.3	3	8	\$197.43
<b>CLEAR PVC (BLUE PARTS) WEIGHTED</b>				
ecoPVC-701W	0.7	1	24	\$142.52
ecoPVC-703W	0.7	3	24	\$172.92
ecoPVC-151W	1.5	1	24	\$134.10
ecoPVC-153W	1.5	3	24	\$208.93
ecoPVC-154W	1.5	4	24	\$241.91

[Learn more about ecoBailer for Sampling Groundwater](#)



PRODUCT SKU	DIAMETER (IN)	LENGTH (FT)	UNITS / CASE	RETAIL
<b>CLEAR PVC PRO (GREEN PARTS) – WIDE MOUTH</b>				
ecoPVC-PRO-151	1.5	1	24	\$116.36
ecoPVC-PRO-153	1.5	3	24	\$159.04
ecoPVC-PRO-154	1.5	4	24	\$187.10
<b>CLEAR PVC PRO (GREEN PARTS) – WIDE MOUTH – WEIGHTED</b>				
ecoPVC-PRO-151W	1.5	1	24	\$132.44
ecoPVC-PRO-153W	1.5	3	24	\$207.27
ecoPVC-PRO-154W	1.5	4	24	\$236.21
<b>POLYETHYLENE PRO (GREEN PARTS) – WIDE MOUTH</b>				
ecoPE-PRO-151	1.5	1	24	\$114.61
ecoPE-PRO-153	1.5	3	24	\$119.95
<b>POLYETHYLENE PRO (GREEN PARTS) – WIDE MOUTH – WEIGHTED</b>				
ecoPE-PRO-151W	1.5	1	24	\$150.90
ecoPE-PRO-153W	1.5	3	24	\$192.51

[Learn more about ecoBailer for Sampling Groundwater](#)



PRODUCT SKU	DIAMETER (IN)	LENGTH (FT)	UNITS / CASE	RETAIL
<b>HYDROCARBON RECOVERY CLEAR PVC (BLUE PARTS)</b>				
ecoPVC-151H	1.5	1	24	\$125.08
ecoPVC-153H	1.5	3	24	\$167.76
ecoPVC-154H	1.5	4	24	\$192.80
ecoPVC-333H	3.3	3	8	\$216.92
<b>DOUBLE VALVE – INTERVAL SAMPLING – CLEAR PVC (BLUE PARTS)</b>				
ecoPVC-151D	1.5	1	24	\$132.15
ecoPVC-153D	1.5	3	24	\$174.82
ecoPVC-154D	1.5	4	24	\$202.89
<b>DRUM SAMPLERS (DRUM THIEVES)</b>				
ecoDRUM-503	0.46	3	30	\$54.81
ecoDRUM-703	0.7	3	30	\$57.00

[Learn more about ecoBailer for Sampling Groundwater](#)



PRODUCT SKU	PLUG TYPE AND SIZE	UNITS	RETAIL
<b>LOCKING WELL PLUGS (POLYPROPYLENE)</b>			
ecoPLUG-1	1 inch Lockable Well Plug	each	\$8.99
ecoPLUG-1.5	1.5 inch Lockable Well Plug	each	\$11.48
ecoPLUG-2	2 inch Lockable Well Plug	each	\$8.36
ecoPLUG-3	3 inch Lockable Well Plug	each	\$18.20
ecoPLUG-4	4 inch Lockable Well Plug	each	\$13.35
ecoPLUG-6	6 inch Lockable Well Plug	each	\$54.76
<b>VAPOUR SAMPLING LOCKING WELL PLUGS (POLYPROPYLENE)</b>			
ecoPLUG-1vc	1 inch Vapour Well Plug	each	\$25.33
ecoPLUG-1.5vc	1.5 inch Vapour Well Plug	each	\$27.82
ecoPLUG-2vc	2 inch Vapour Well Plug	each	\$28.00
ecoPLUG-3vc	3 inch Vapour Well Plug	each	\$34.55
ecoPLUG-4vc	4 inch Vapour Well Plug	each	\$29.69
ecoPLUG-6vc	6 inch Vapour Well Plug	each	\$71.10
ecoPLUG-pa	Vapour Sampling Port Adapter	each	\$14.00

[Learn more about Well Plugs](#)

## HYDRASLEEVE NO-PURGE GROUNDWATER SAMPLER



PRODUCT SKU	OLD SKU	DESCRIPTION	RETAIL
<b>HYDRASLEEVES for 2 inch wells</b>			
GI-GSH-405	HS-1 SKY SS	HydraSleeve: 0.9" OD x 48" = 270 ml	\$51.83
GI-GSH-110	HS-2	HydraSleeve: 1.5" OD x 30" = 600 ml	\$37.02
GI-GSH-130	HS-2-1L	HydraSleeve: 1.5" OD x 38" = 1000 ml	\$50.35
GI-GSH-155	HS-2-A	HydraSleeve: 1.5" OD x 30" = 600 ml - Armoured	\$53.31
GI-GSH-150	HS-2-1L-A	HydraSleeve: 1.5" OD x 38" = 1000 ml - Armoured	\$68.12
GI-GSH-300	GI 2" TW-Clip	Top Spring Clip for 1.5" & 1.7" Hydrasleeves	\$5.18
GI-GSH-299	GI BW Clip	Bottom Spring Clip for Weights and 0.9" HydraSleeves	\$2.96
GI-GSW-304-C	GI 5oz BW	5 oz Bottom Stainless Steel Weight w/clip OD = 0.75"	\$19.25
GI-GSW-305-C	GI 8oz BW	8 oz Bottom Stainless Steel Weight w/clip OD = 0.75"	\$34.06
GI-GSW-316-C	GI 17oz CBW	17 oz Bottom Stainless Steel Weight w/clip OD = 1.25"	\$51.09
GI-GSW-317-C	GI 23oz CBW	23 oz Bottom Stainless Steel Weight w/clip OD = 1.25"	\$54.79

[Learn more about HydraSleeve No-Purge Groundwater Sampler](#)



## HYDRASLEEVE NO-PURGE GROUNDWATER SAMPLER (cont')



PRODUCT SKU	OLD SKU	DESCRIPTION	RETAIL
<b>HYDRASLEEVES for 4 inch wells</b>			
GI-GSH-230	GI HS-4-2L	HydraSleeve: 2.9 inch OD x 37 in = 3.1 L	\$59.23
GI-GSH-250	GI HS-4-2L Arm	Hydrasleeve: 2.9 inch OD x 37 in = 2.5 L - Armoured	\$74.04
GI-GSH-310	–	Top Spring Clip for 2.75 & 2.9 inch Hydrasleeves	\$6.66
GI-GSH-299	GI BW Clip	Bottom Spring Clip For Weights and 0.9 in HydraSleeves	\$2.96
GI-GSW-316-C	GI 17oz CBW	17 oz Bottom Stainless Steel Weight w/clip OD = 1.25"	\$51.09
GI-GSW-317-C	GI 23oz CBW	23 oz Bottom Stainless Steel Weight w/clip OD = 1.25"	\$54.79
<b>SPEED BAG</b>			
GI-GSH-510	GI-HS-2 SB	Speed Bag: 1.75 inch OD x 37 in = 900 ml	\$56.27
GI-GSH-515	–	Speed Bag: 1.5 inch OD x 30 in = 500 ml	\$56.27
GI-GSH-300	GI 2" TW-Clip	Top Spring Clip for 1.5 & 1.7" Hydrasleeves	\$5.18
GI-GSW-305-C	GI 8oz BW	8 oz. Bottom Stainless Steel Weight w/clip OD = 0.75"	\$34.06

[Learn more about HydraSleeve No-Purge Groundwater Sampler](#)

## HYDRASLEEVE NO-PURGE GROUNDWATER SAMPLER (cont')



PRODUCT SKU	OLD SKU	DESCRIPTION	RETAIL
<b>SUPER SLEEVES (Requires top collar)</b>			
GI-GSH-430	GI HDSS-1L	SuperSleeve: 1.75" OD x 31" = 1 L	\$37.02
GI-GSH-435	GI HDSS-1.5L	SuperSleeve: 1.75" OD x 52" = 1.5 L	\$39.98
GI-GSH-440	GI HDSS-2L	SuperSleeve: 1.75" OD x 60" = 2 L	\$42.94
GI-GSH-470	GI PFCHDSS-1L	SuperSleeve - HDPE: 1.75" OD x 31" = 1 L	\$40.72
GI-GSH-475	GI PFCHDSS-2L	SuperSleeve - HDPE: 1.75" OD x 60" = 2 L	\$48.87
GI-GSH-360	GI 2" HDSS TW35	SuperSleeve Top Collar & 35 oz Top Weight 1.75" OD	\$100.69
GI-GSH-322	-	Top collar Assembly for 0.9 in Super Skinny Sleeve	\$58.32
GI-GSH-323	GI 2" HDSS PVC	2-Piece PVC Collar only (no weight included) for SuperSleeves 1.75" OD	\$48.87
GI-GSH-299	GI BW Clip	Bottom Spring Clip For Weights and 0.9" HydraSleeves	\$2.96
GI-GSW-304-C	GI 5oz BW	5 oz Bottom Stainless Steel Weight w/clip OD = 0.75"	\$19.25
GI-GSW-305-C	GI 8oz BW	8 oz Bottom Stainless Steel Weight w/clip OD = 0.75"	\$34.06
<b>HYDRASLEEVE ACCESSORIES</b>			
GI-GSH-335	-	Surface water Adapter for HydraSleeve	\$111.06
GI-GSH-338	-	Drone Cone Adapter	\$14.07

# waterra

## WATER LEVEL SENSOR

CANADIAN RETAIL PRICING (Prices in CAD)



PRODUCT SKU	DESCRIPTION	RETAIL
<b>WATER LEVEL – OPEN REEL – Polyethylene Well Tape</b>		
WS2-PE-30 m	30 m Polyethylene Well Tape	\$497
WS2-PE-50 m	50 m Polyethylene Well Tape	\$572
WS2-PE-100 m	100 m Polyethylene Well Tape	\$697
WS2-PE-100 ft	100 foot Polyethylene Well Tape	\$497
WS2-PE-250 ft	250 foot Polyethylene Well Tape	\$635
<b>WATER LEVEL – CLOSED REEL – Polyethylene Well Tape</b>		
WS2-PE-30 m-closed	30 m Polyethylene Well Tape	\$497
WS2-PE-100 ft-closed	100 foot Polyethylene Well Tape	\$497

[Learn more about Water Level Sensor](#)



PRODUCT SKU	DESCRIPTION	RETAIL
<b>OIL-WATER INTERFACE SENSOR – OPEN REEL – Polyethylene Well Tape</b>		
HS2-PE-30 m	30 m Polyethylene Well Tape	\$683
HS2-PE-50 m	50 m Polyethylene Well Tape	\$774
HS2-PE-100 ft	100 foot Polyethylene Well Tape	\$683
HS2-PE-250 ft	250 foot Polyethylene Well Tape	\$849
<b>OIL-WATER INTERFACE SENSOR – CLOSED REEL – Polyethylene Well Tape</b>		
HS2-PE-30 m-closed	30 m Polyethylene Well Tape	\$683
HS2-PE-100 ft-closed	100 foot Polyethylene Well Tape	\$683

[Learn more about Oil-Water Interface Sensor](#)

## MISCELLANEOUS SUPPLIES FOR GROUNDWATER MONITORING



Graduated Tether



Well Slug

PRODUCT SKU	DESCRIPTION	RETAIL
<b>MISCELLANEOUS</b>		
WVW	Waterra Valve Wrench fits all but SS-6, 9 & 19 valves	\$2.50
WTC	Waterra Tubing Cutter	\$19.50
Graduated Tether	3/16 inch wide x 3000 feet markers every foot	\$165.00
Well Slug	Waterra Well Slug 3 sections included total length 4.9 feet = 1.492 m long	\$300.00
Extension Pole	Painter / window washer pole best secured locally due to high shipping costs	local
Swing Arm Sampler	Bottle holder for surface water sample complete with adjustable elbow <i>Does not include the pole which can be sourced at a hardware store Fits Waterra Bottle</i>	\$149
Bottle	Polyethylene Bottle fits Swing Arm Sampler	\$5

[Learn more about Waterra Well Slug](#)